

龟 一
2024



龟 一
G U I Y I

陶瓷再生UHPC板材

微
小
的
力
量

让
世
界
更
美
好

废弃 - 破碎 - 再生
ABANDONMENT - FRAGMENTATION - UPCYCLING

微 小 的 力 量 让 世 界 更 美 好

" Small actions, big impact. Let's create a more beautiful world
through sustainable practices. "



广东省中骋建材科技有限公司

广东省佛山禅城区石湾镇跃进路148号内9栋 龟一美术馆楼

Tel. 139 2991 9892 Fax.0757-82569836

GUANGDONG ZHONGCHENG BUILDING MATERIALS TECHNOLOGY CO.,LTD

add: Building 9,NO.148,Yuejin Road, Shiwan Town,street, Chancheng District, Foshan City,Guangdong.



U P C Y C L I N G

微小的力量 让世界更美好

"Small actions, big impact . Let's create a more beautiful world
through sustainable practices ."



全球环境问题的影响

Impact of global environmental issues

由于人口增长、城市化和经济增长，预计未来 30 年全球垃圾废物产生量将从 2019 年的 22 亿吨跃升至 34 亿吨。全球每年只有不到 20% 的垃圾被回收，大量垃圾仍被送往垃圾填埋场，与发达国家相比，发展中国家居民受到不可持续管理废物的影响更为严重。根据世界银行的数据，在低收入国家，90% 以上的垃圾通常被弃置在不受监管的垃圾场或露天焚烧，每年大约有 1500 万海洋生物因塑料垃圾而死亡，且数量在不断增加，全球每年产生 20 亿吨城市垃圾，3 千万土地变垃圾场，如何变“废”为宝？变成一个严峻且现实的社会问题...

Due to population growth, urbanization, and economic development, global waste production is expected to increase from 2.2 billion tons in 2019 to 3.4 billion tons in the next 30 years. Less than 20% of the world's waste is currently recycled each year, with a significant amount being sent to landfills. The impact of unsustainable waste management is more severe on residents in developing countries compared to developed nations. According to the World Bank, over 90% of waste in low-income countries is typically dumped in unregulated landfills or openly burned. Each year, approximately 15 million marine animals die from plastic waste, and this number is increasing. With 2 billion tons of urban waste generated annually and 30 million hectares of land converted into garbage dumps, transforming waste into resources has become a pressing and realistic social issue.



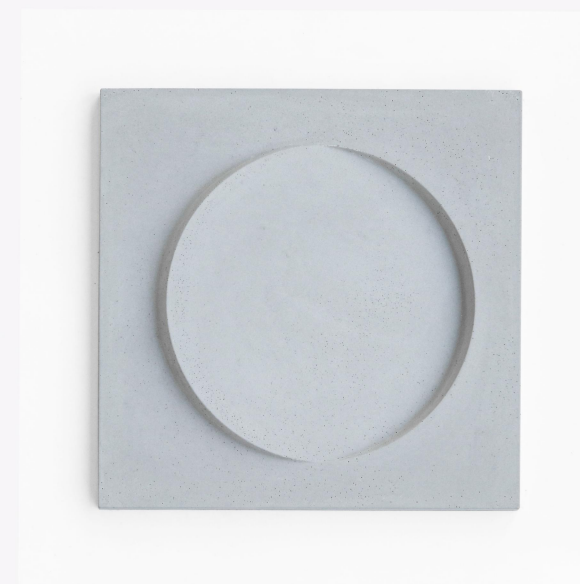
龟 一
G U I Y I

龟——一直关注材料发展趋势，以可持续发展为己任，投身再生材料领域的开拓，不慕繁华，不追潮流，化身拾荒者，研究废弃石矿、陶瓷碎料、建筑垃圾、遗弃塑料等等无用之物的再生之路，在龟一的眼中和手中，没有一片垃圾应该被丢弃，我们都能将其变成时尚的建筑外衣，这样的践行，卑微且美丽，希望越来越多的设计师，品牌商参与其中，微小的力量让世界更美好...

GUIYI, is committed to sustainable development and has been closely following the trends in material development. We specialize in the exploration of renewable materials and do not strive for luxury or follow trends. Instead, we take on the role of scavengers, researching the path of regeneration for useless materials such as abandoned stone mines, ceramic debris, construction waste, and discarded plastics. For GUIYI, no piece of garbage should be discarded, as we can transform them into fashionable building materials. This humble yet beautiful practice aims to encourage more designers and brand owners to participate, using their small efforts to make the world a better place.



日用瓷再生混凝土





清水系列

FAIR- FACED CONCRETE SERIES

将废瓷材料作为成分研发新的骨料配方，使其能与混凝土工艺完美糅合。

配合上广泛实用性的视觉美学和功能设定，辅之精细机械化的生产加工技术，赋予废弃陶瓷全新运用形态与设计价值。

清水混凝土风格是一种兼具环保、耐久性和美学价值的建筑风格，能够很好地满足现代人对建筑环境的需求。

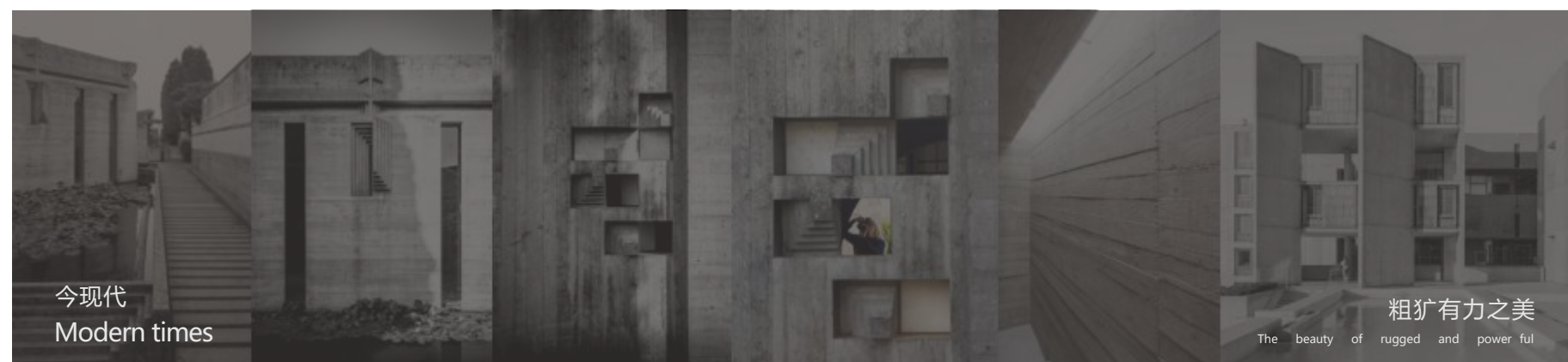
Transforming waste into wonder: our innovative use of discarded ceramics creates stunning new forms and functional designs that are as beautiful as they are sustainable. Nature and industry in harmony: our concrete creations blend the raw beauty of natural materials with the precision and efficiency of modern manufacturing, resulting in structures that are both rugged and refined.

Crafting beauty from chaos: our approach to design embraces the unexpected, using unconventional materials and techniques to create striking and memorable works of art and architecture.

Sustainable style for a brighter tomorrow: our commitment to eco-friendly production and cutting-edge design makes us the perfect choice for those who want to make a positive impact on the world while still expressing their unique sense of style.

混凝土美学

Concrete aesthetics



龟——一直倡导安静、纯粹、凸现材料本质的美学价值，清水混凝土质朴本真，节能低碳，是龟一研究的重要方向，为更多时尚和艺术空间提供更符合当代审美价值的贴面和间隔材料

" GUIYI has always advocated for an aesthetic value that emphasizes quietness, purity, and the natural simplicity of materials. With its unadorned and authentic qualities, clear water concrete represents an important area of research for GUIYI, as it embodies the values of energy efficiency and low carbon emissions. GUIYI aims to provide more contemporary and artistic spaces with surfacing and decorative materials that align with current aesthetic preferences."

UHPC：超高性能活性混凝土

ULTRA- HIGH PERFORMANCE REACTIVE CONCRETE

超高性能混凝土的设计理论是最大堆积密度理论，其组成材料不同粒径颗粒以最佳比例形成最紧密堆积，即毫米级颗粒（骨料）堆积的间隙由微米级颗粒（水泥、粉煤灰、矿粉）填充，微米级颗粒堆积的间隙由亚微米级颗粒（硅灰）填充。硅灰能与水化产物(氢氧化钙)反应生成更细的颗粒进行二次填充，达到更致密的效果。

我们通过多年的研发实验，配制具有强度高、韧性(增强性纤维)及抗渗性能好的独家配方，实现了 8mm 薄板的量产。

Ultra-High Performance Reactive Concrete (UHPC) is designed based on the maximum packing density theory. Its constituent materials, including aggregates of different particle sizes, are proportioned in the optimal ratio to form the most tightly packed structure. The voids between the millimeter-sized aggregates are filled with micrometer-sized particles such as cement, fly ash, and mineral powder, while the voids between the micrometer- sized particles are filled with sub-micrometer-sized particles such as silica fume. Silica fume can react with the hydration products (calcium hydroxide) to generate even finer particles for secondary filling, resulting in a denser structure.

After years of research and development, we have formulated an exclusive recipe with high strength, toughness (reinforcing fibers), and excellent impermeability. We have successfully achieved mass production of 8mm-thick plates.

超高性能混凝土

Ultra high performance concrete

低能耗

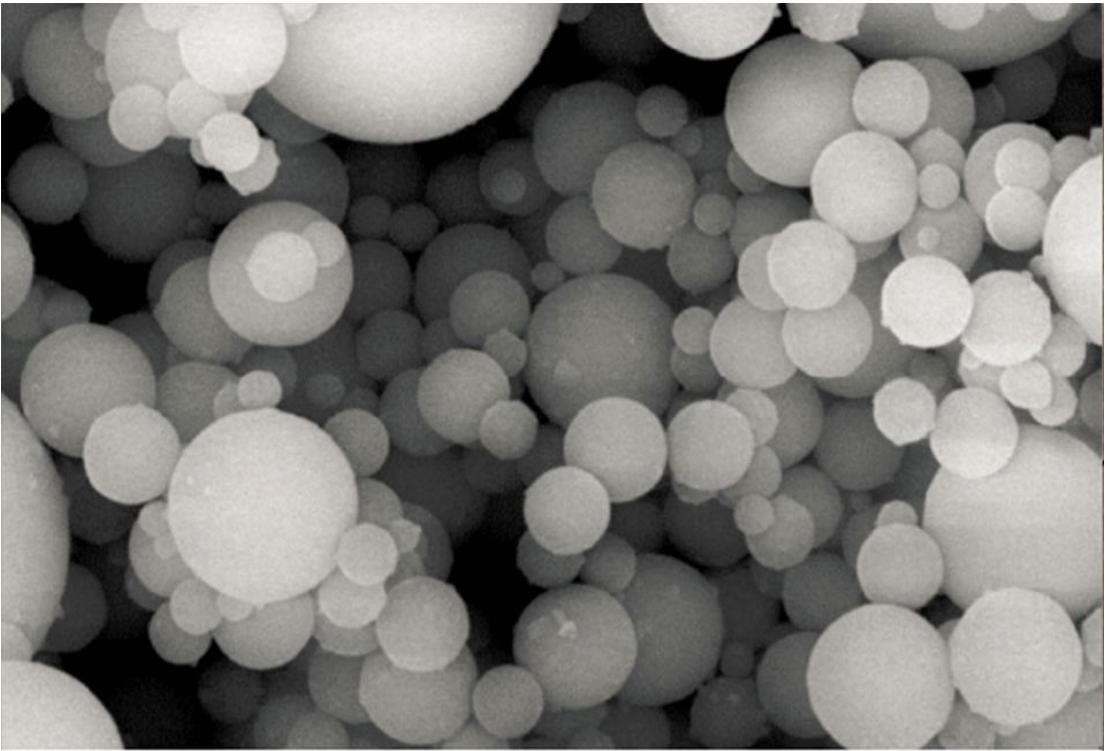
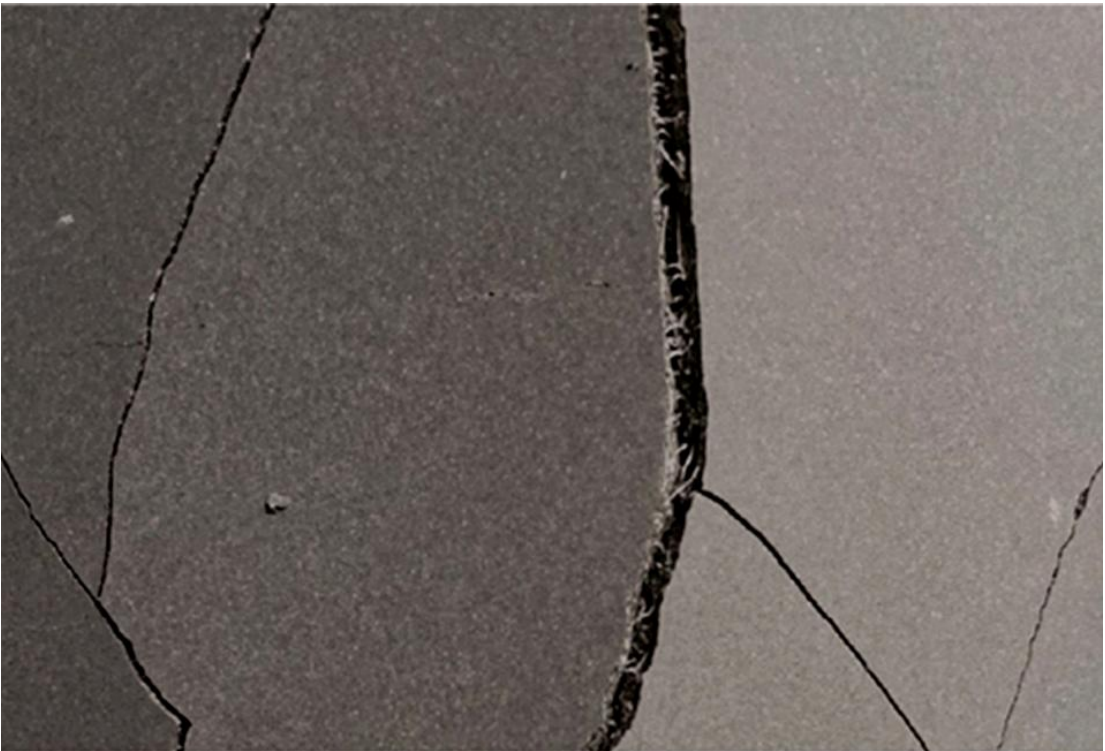
Low energy consumption

更轻薄

Lighter and thinner

产品: Product	普通混凝土板 Ordinary concrete slab	瓷砖 Ceramic tile	超高性能混凝土板 Ultra high performance concrete slab
厚度: thickness	20 mm	8 mm	8 mm
碳排放: CO2 emission	12.6kg	12.6kg	4.9kg

数据显示，生产 1 平方瓷砖和普通混凝土板材的 CO2 排放量是超高性能混凝土(UPHC)板材的 的 2.5 倍。





哲好茶

TAKE
TEA EASY

感受一千米云雾之上的气息

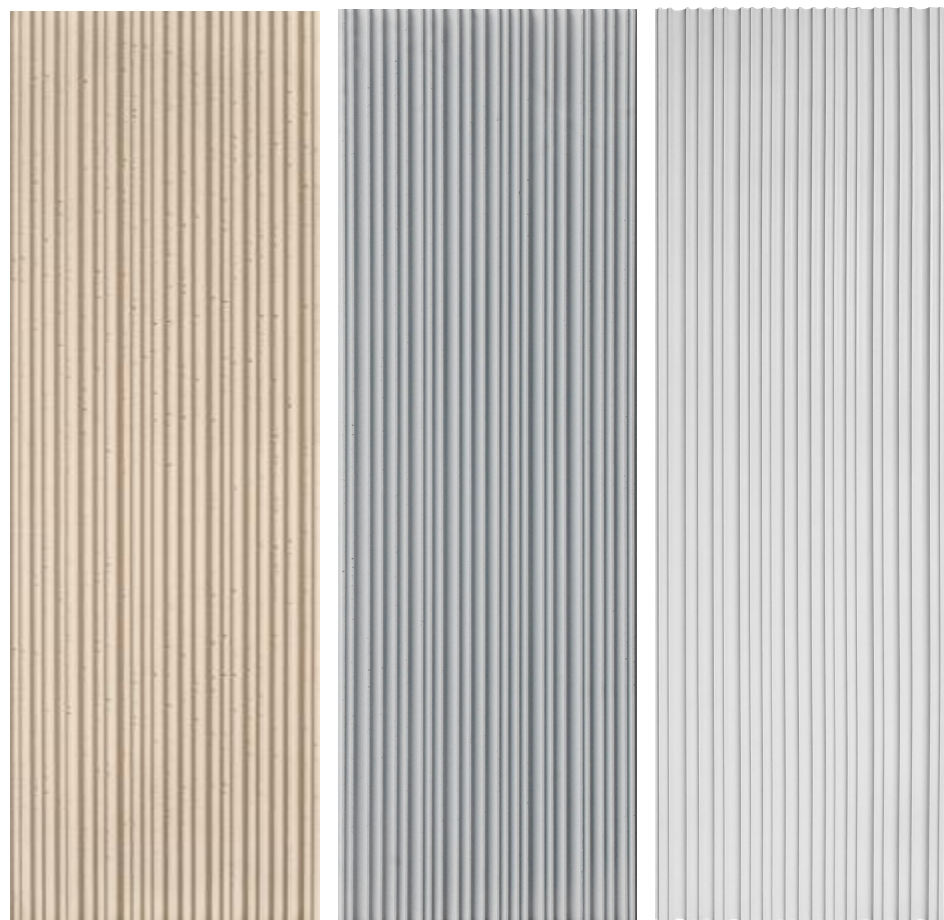
Feel the breath from clouds above one kilometer

品质原叶茶

我们严选优质茶品，在清晨采摘，
秉承自然生态的初心，泡出茶之

敬茶

条纹板
Domestic porcelain



QT02 土黄 size: 945x298x12mm QT01 灰色 QT1-M1白色



为了契合哲品的品牌理念，我们特地调配了大地的土黄色，配合自然非均匀的的线条肌理，圆润的定制阳角收口线，让空间更加舒适、自然。

To align with TENS T's brand philosophy, we have specially formulated a natural earthy hue and incorporated natural, non-uniform lines. The rounded customized angles create a comfortable and natural space.



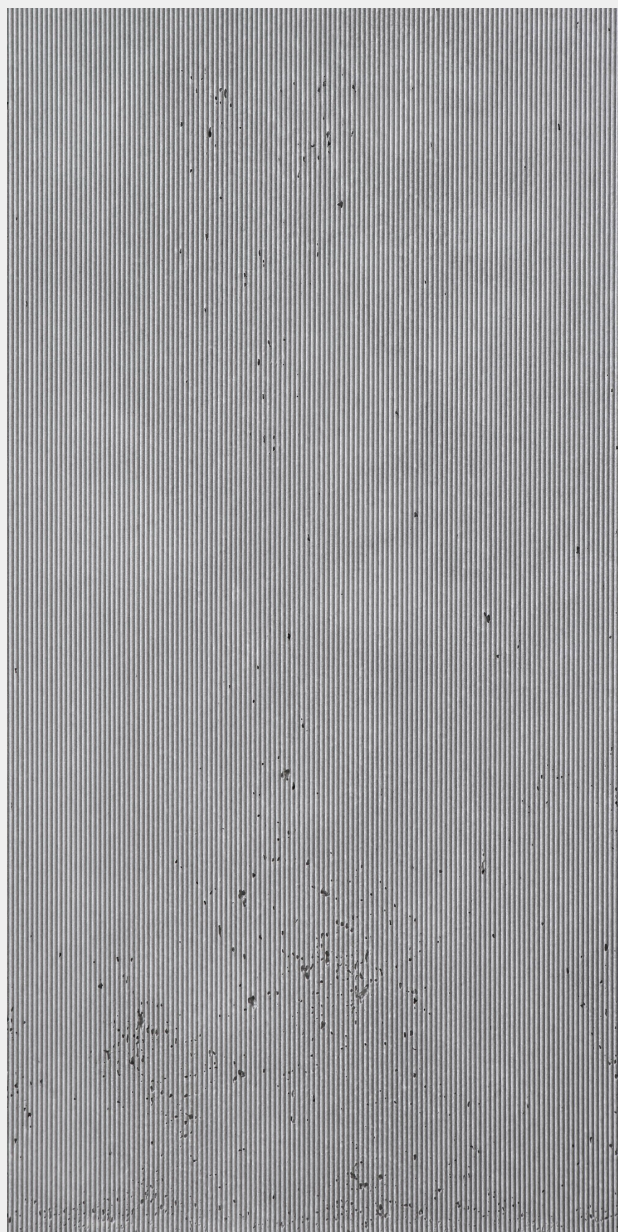
ZENS 哲品是全球知名的茶具、家居和生活方式品牌，
倡导健康、环保的生活方式，提供自然，正念，舒适，健康的生活体验。

ZENS is a globally renowned brand for tea sets, home decor, and lifestyle products,
advocating for a healthy and eco-friendly way of life. We provide a natural, mindful, comfortable,
and healthy living experience.



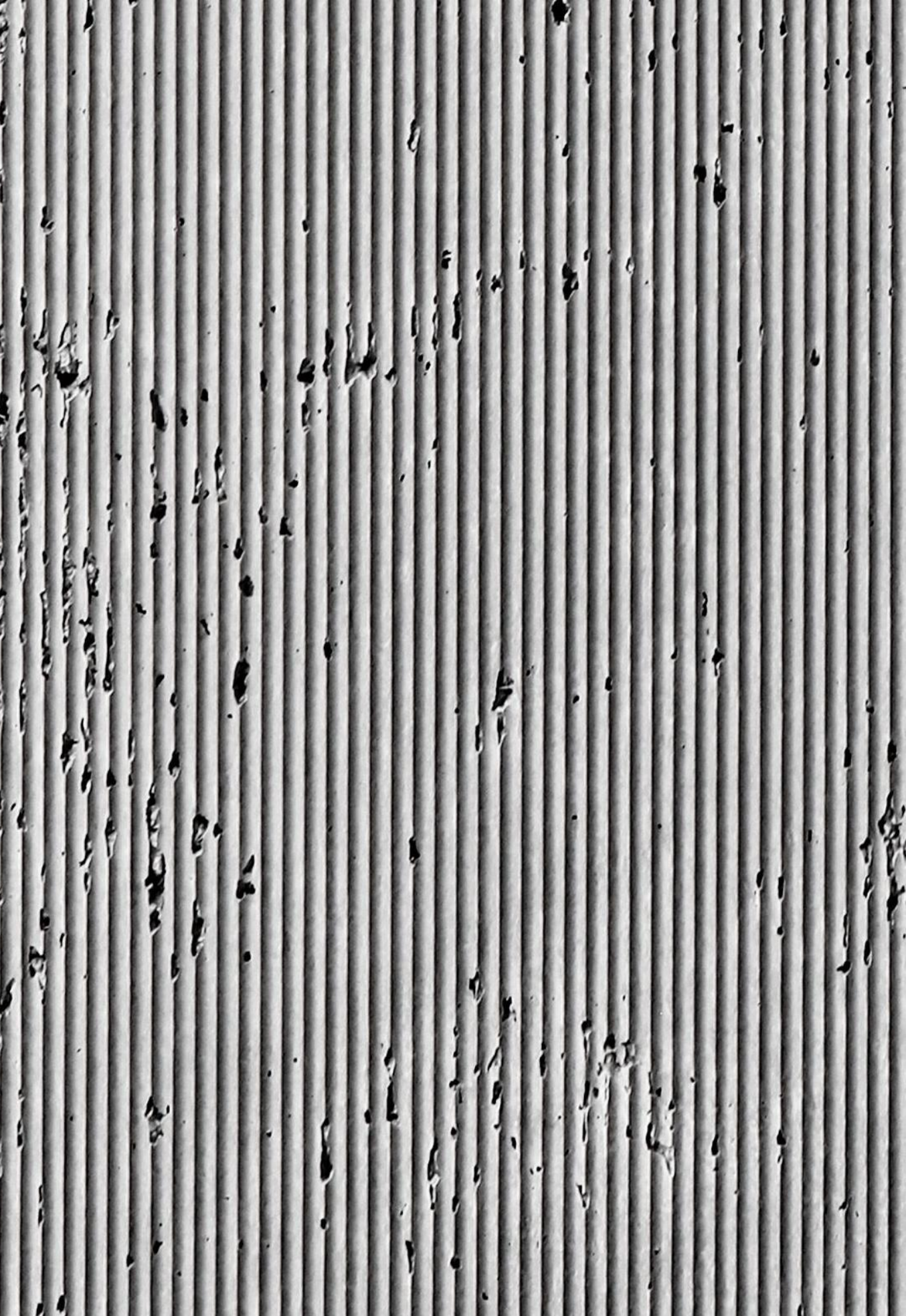


条纹(凸)虫洞板
Striped (convex) wormhole plates

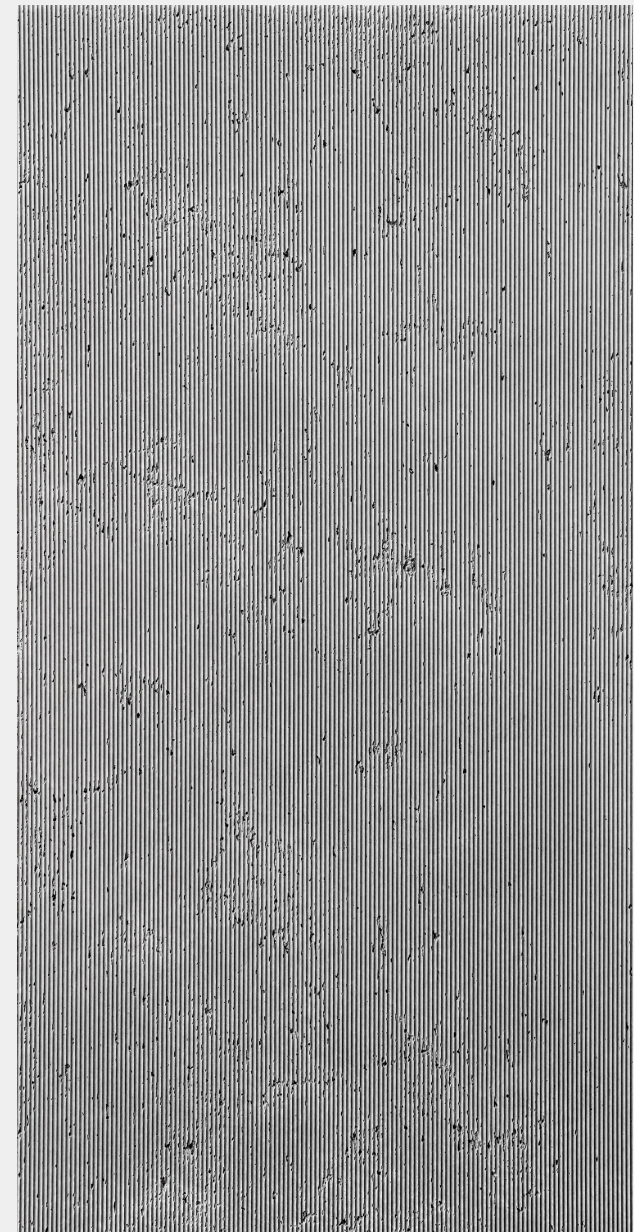


QC05

size: 1200x600x14mm



条纹(凹)虫洞板
Striped (concave) wormhole plates



QC06

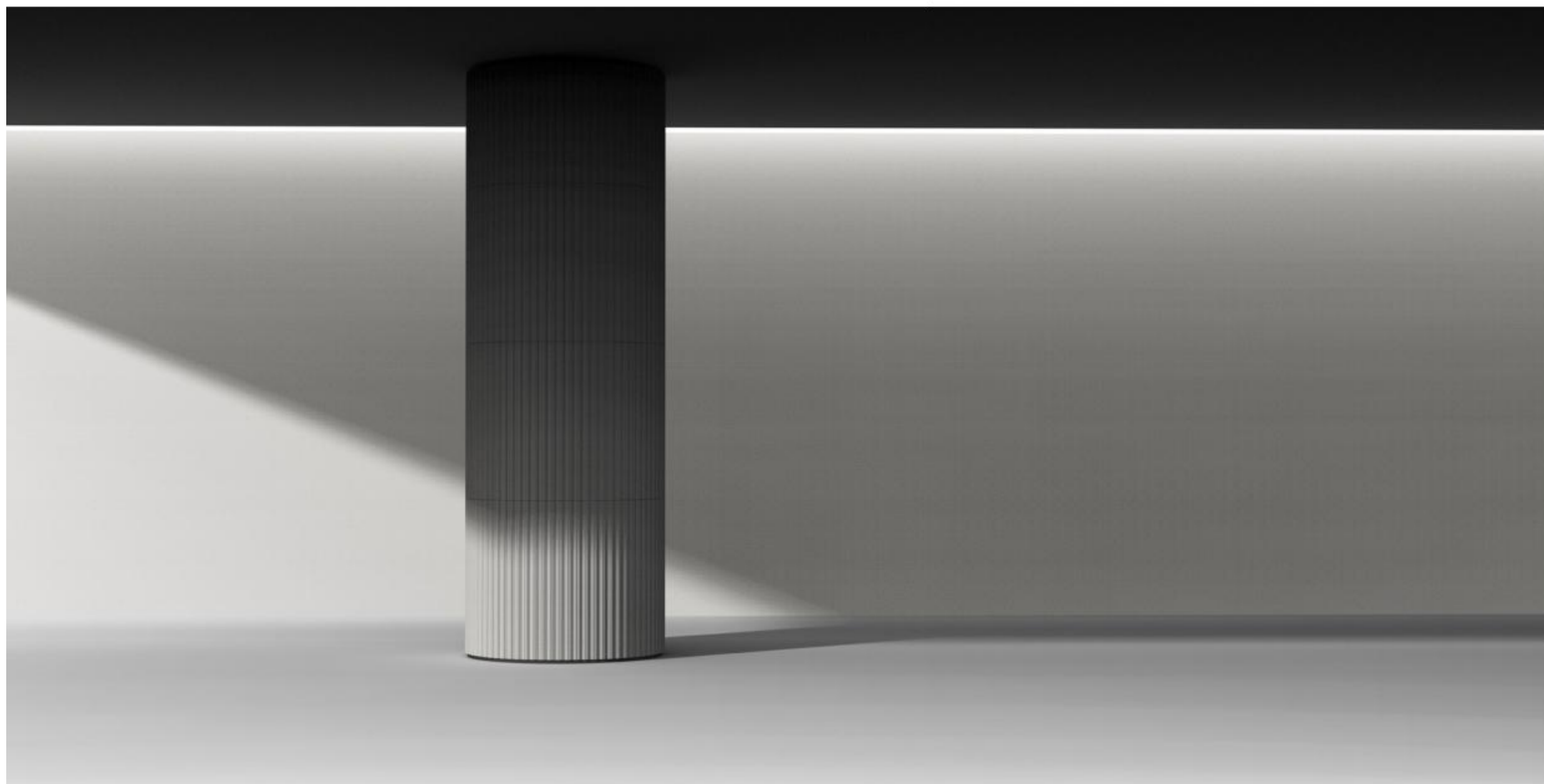
size: 1200x600x14mm

小条砖
Rectangular brick

QT4
Size: 945x50x15mm



QT3
Size: 945x50x15mm





LORBN



现浇木纹板
Cast-in-place wood grain board



QM1



QM2

Size: 1200x600x10mm



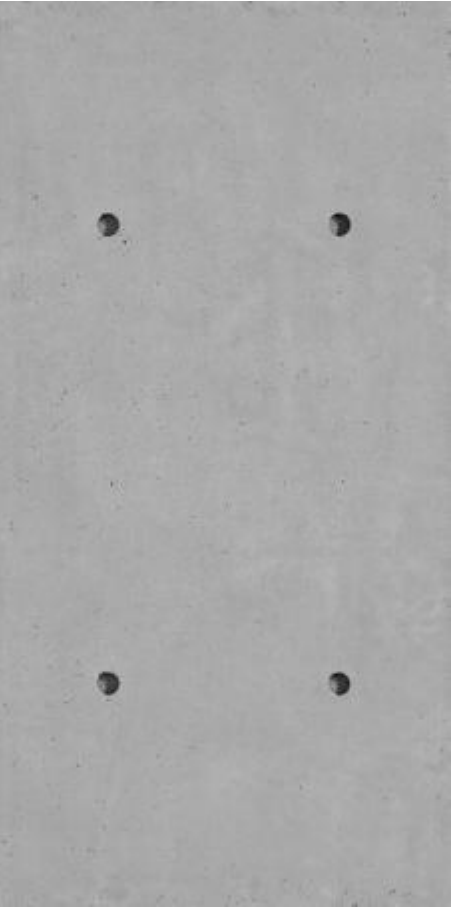
LORBN 劳宾佛山居然之家旗舰店

意大利的高端浴室家具设计师品牌 “LORBN 劳宾”，
公司秉承着 “科技创新、精益化生产、个性化设计” 的理念，
致力于推动浴室家居产业的发展。

统一的混凝土的材质为品牌提供很强的个性与力量感。

LORBN China flagship store showcases the premium Italian bathroom furniture designer brand "LORBN". Guided by the principles of technological innovation, lean production, and personalized design, LORBN is committed to advancing the development of the bathroom home furnishing industry. The use of uniformly coordinated concrete material as the main material for space decoration provides the brand with a strong sense of individuality and strength.

砧栓孔清水板
Clean water board



QC1 Size: 1200x600x12mm





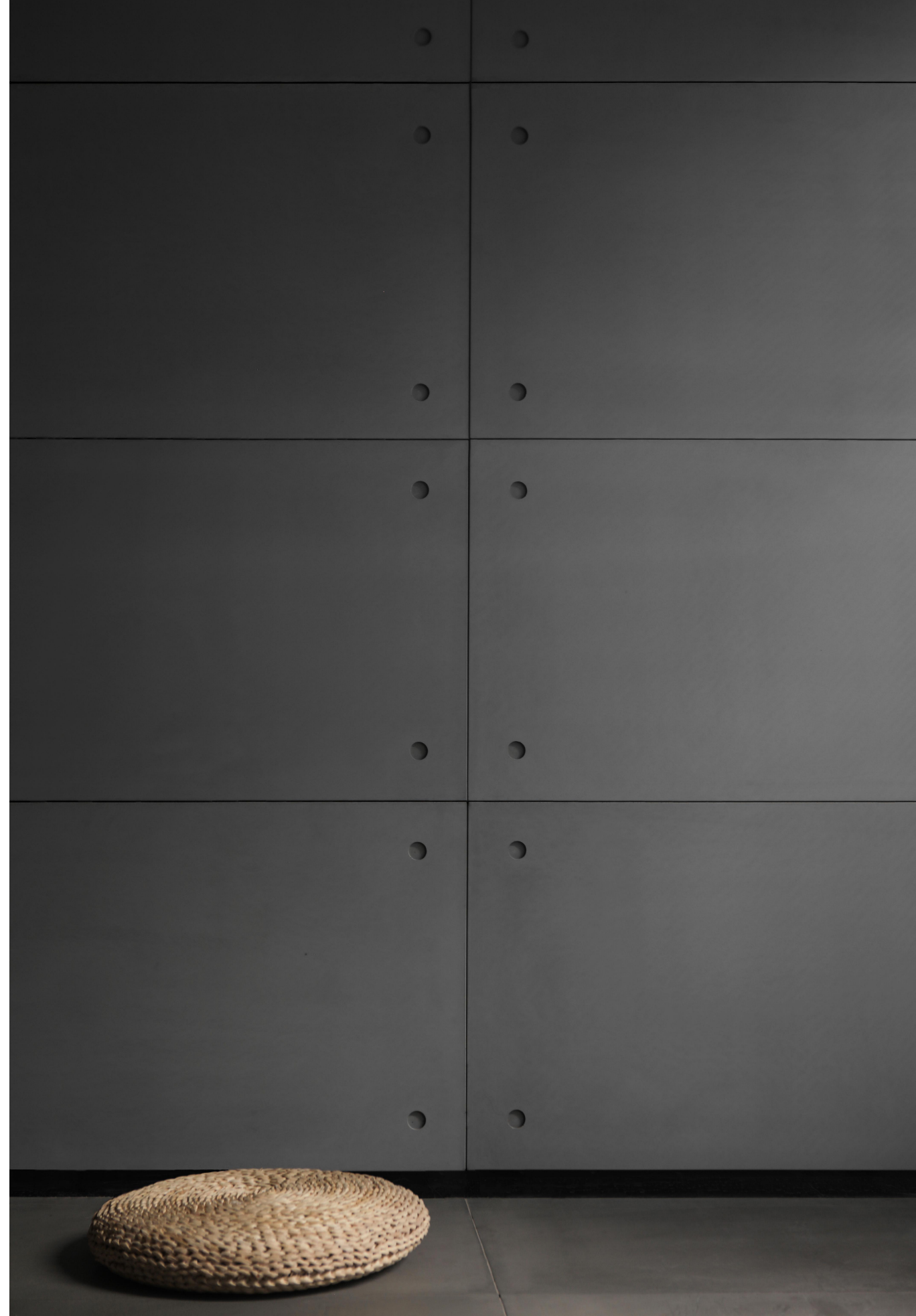
LORBN
RAW SHOWROOM

砣栓孔平板
tong Shuan hole plate



QZ04

Size: 1200x600x10mm







欧松板
Shimizu SOB



QO01

Size1200x600x10mm





虫洞板
Wormhole plates



QC03



QC04

Size: 1200x600x14mm





河沙板
River sand board



QP4

Size: 1200x600x10mm

白沙滩
white sand beach



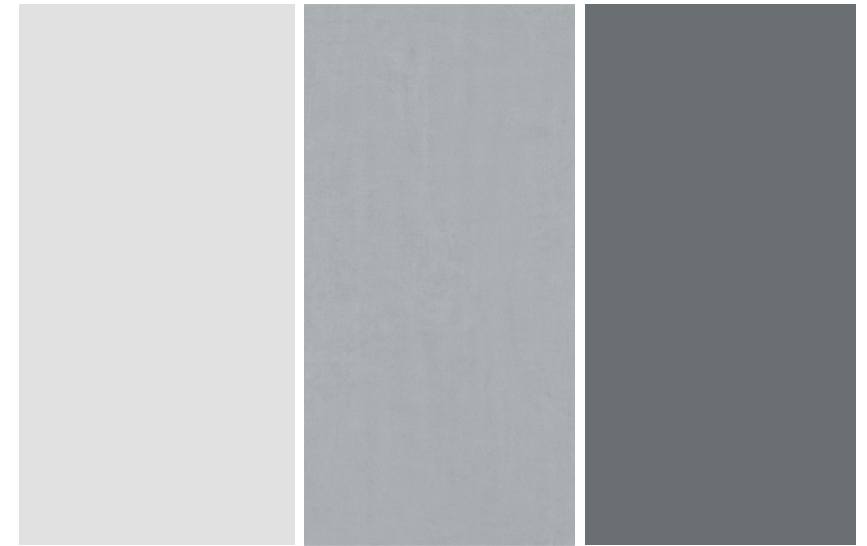
QH01

Size: 998x298x20mm 13KG





平板
Grating plate



QP1

Size: 1200x600x8-20mm

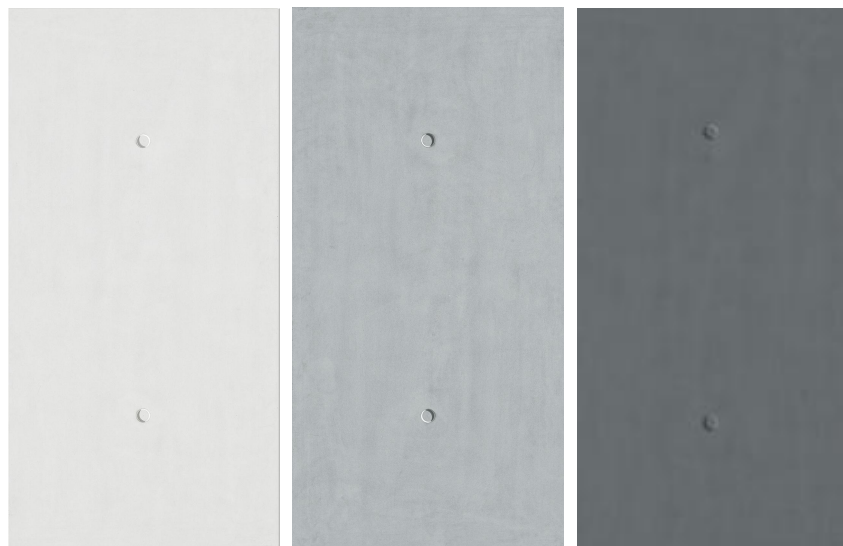
QP2

QP3

用极简的设计手法和原始自然的材料，将自然融在生活中，
诠释纯净而奢侈的人居理想和流贯着艺术光感的美学宣言。

Prefabricated concrete panels with exposed aggregate surfaces embody a natural aesthetic through minimalistic design and the use of raw materials. The fusion of nature and modern living spaces exemplifies a luxurious and pure living ideal, while conveying an artistic sensibility through light and shadow.

平孔板
Flat orifice plate



QZ1

Size: 1200x600x8-20mm

QZ2

QZ3

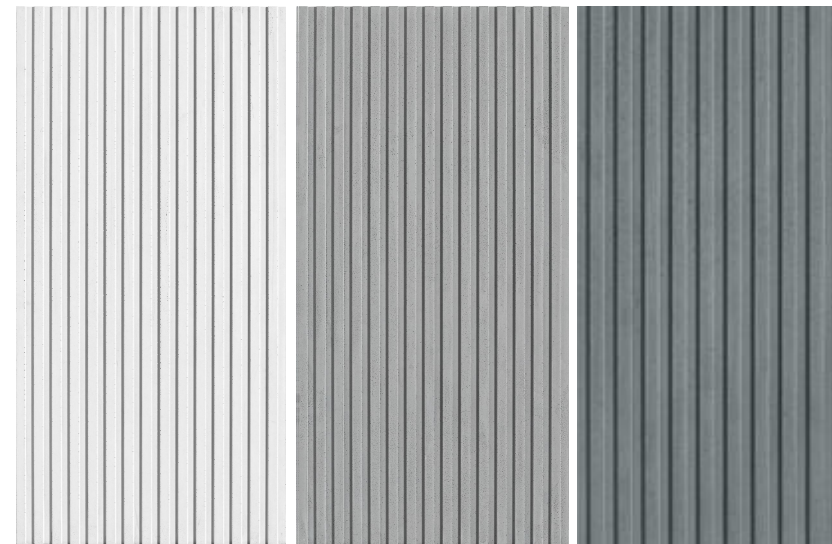
颜色、质感、细节，堆砌出完美家的表情，
谱写出疗愈空间的自然序曲。

Color, texture, details, build up the expression of the perfect home, and
compose the natural prelude of healing space.





格栅版
Grating plate



QG1

Size: 1200x600x13-20mm

QG2

QG3

把材质游戏玩得出奇。细密的线条显现出无限的张力，
宛如行走的天然调，舒适即视感尽现。

Play the material game strangely. The fine lines show infinite tension,
It is like the natural tone of walking, and it is comfortable to see.



QT9 Size: 1200x150x10mm

清水·木纹板
Wood board

始于自然，归于本真。源于对“真实”的追求，
去伪存真，摒弃多余的设计，还原材料的真实之美。

It begins with nature and ends with nature. It originates from the pursuit
of "truth", eliminating the false and reserving the true, discarding the
redundant design, and restoring the true beauty of materials.



清水·小条砖
Domestic porcelain

QT10 Size: 600x50x25mm



茶叶渣板
Tea Waste Composite Board



QZS01

Size: 200x200x12mm

颜色、质感、细节，堆砌出完美家的表情，
谱写出疗愈空间的自然序曲。

Color, texture, details, build up the expression of the perfect home, and
compose the natural prelude of healing space.





3d立体砖
3D Relief Brick



3D-01

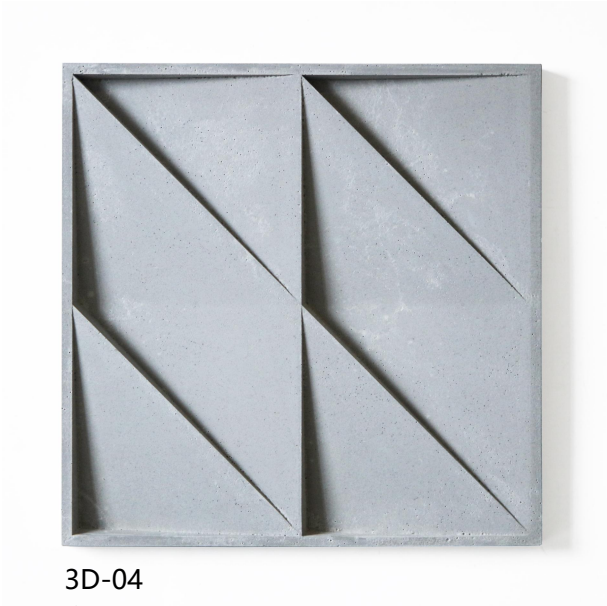
Size: 150x150x15mm

3D-02

3d立体砖
3D Relief Brick



3D-03
size: 250x250xH15mm



3D-04
size: 200x200xH12mm



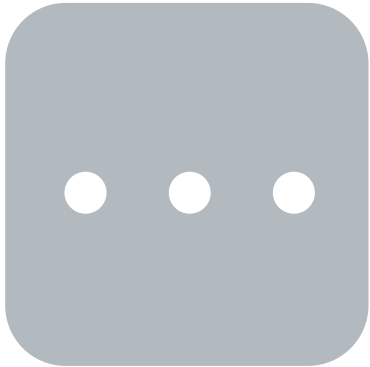
3D-05
size: 200x200xH23mm

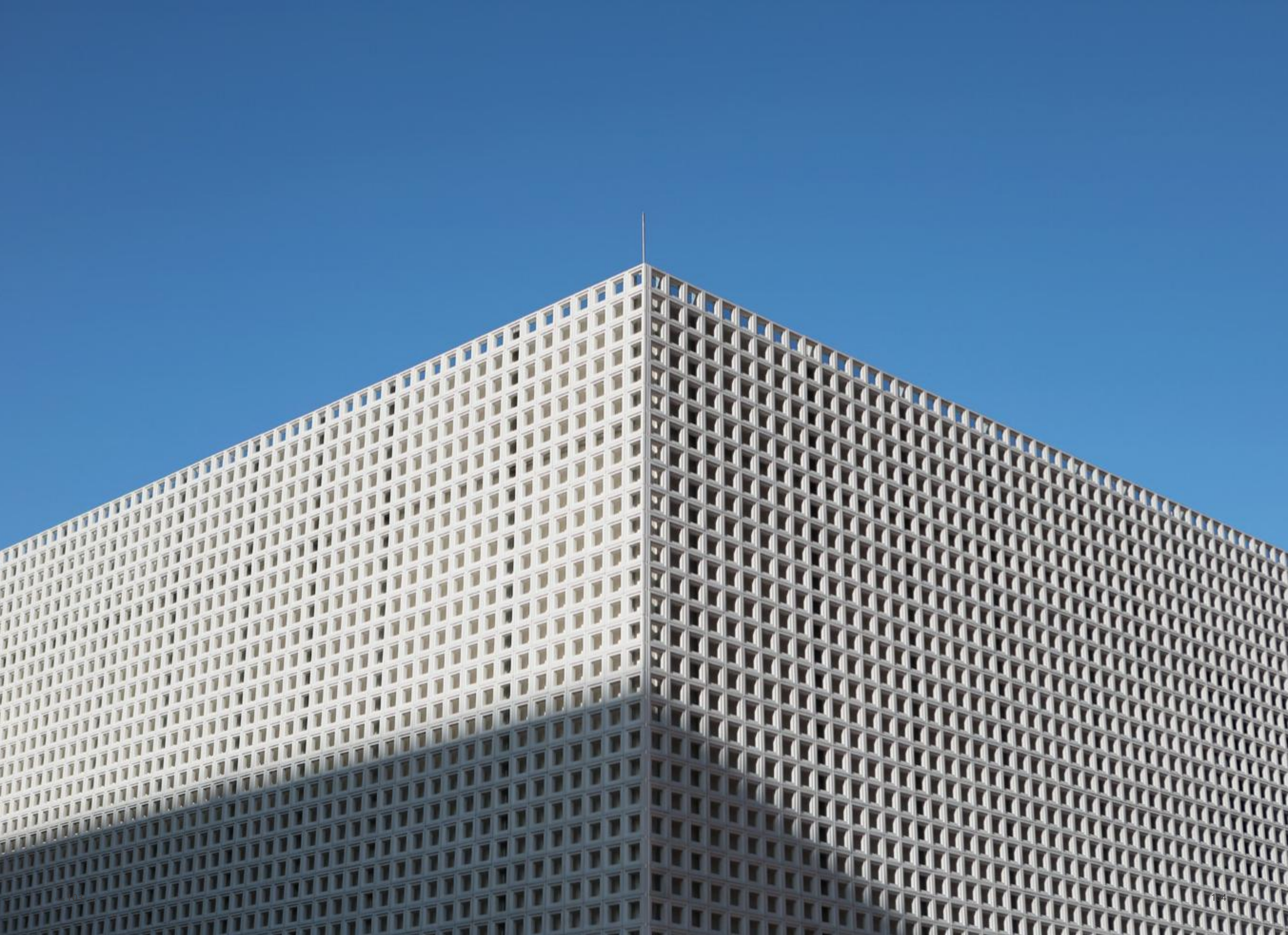


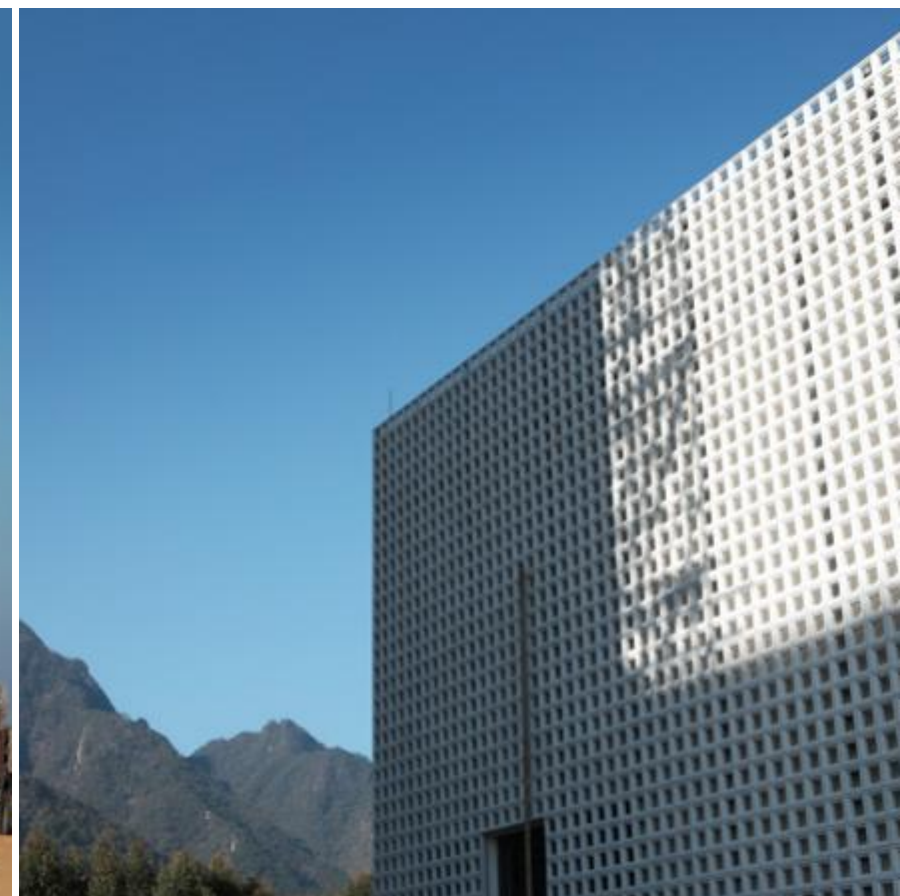
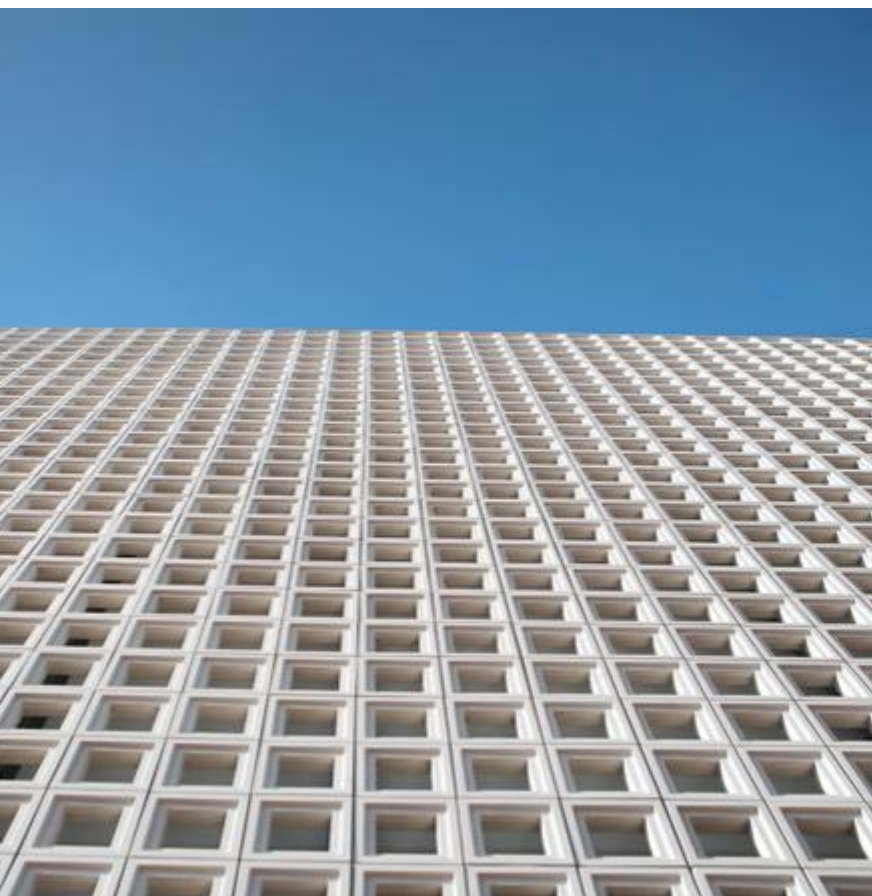
3D-06
size: 200x200xH15mm



3D-07
size: 200x200xH15mm







满足建筑采光、通风的基本需要，同时为建筑营造强烈光影关系
Meet the basic needs of building lighting and ventilation, and create a strong light and shadow relationship for the building



QK08-M1

Size: 200x200x60mm

Size: 200x200x100mm



QK08-M2

Size: 200x200x60mm

Size: 200x200x100mm



QK15白色
size: 200x200xH100mm



QK16灰色
size: 200x200xH100mm



QK17白色
size: 200x200xH100mm



QK18灰色
size: 200x200xH100mm



QK19白色
size: 200x200xH100mm



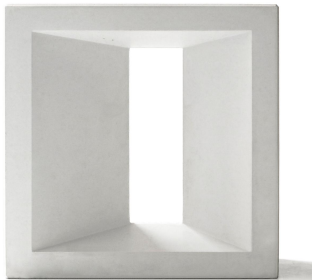
QK20灰色
size: 200x200xH100mm



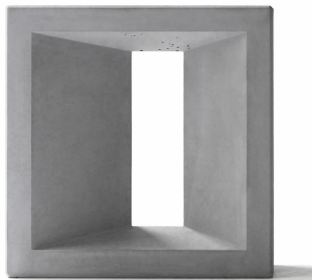
QK23白色
size: 200x200xH100mm



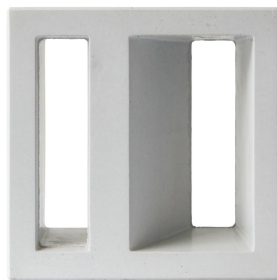
QK24灰色
size: 200x200xH100mm



QK13白色
size: 200x200xH100mm



QK14灰色
size: 200x200xH100mm



QK21白色
size: 200x200xH100mm



QK22灰色
size: 200x200xH100mm



云门5季文旅小镇

甲方| 嘉德丰文化旅游有限公司

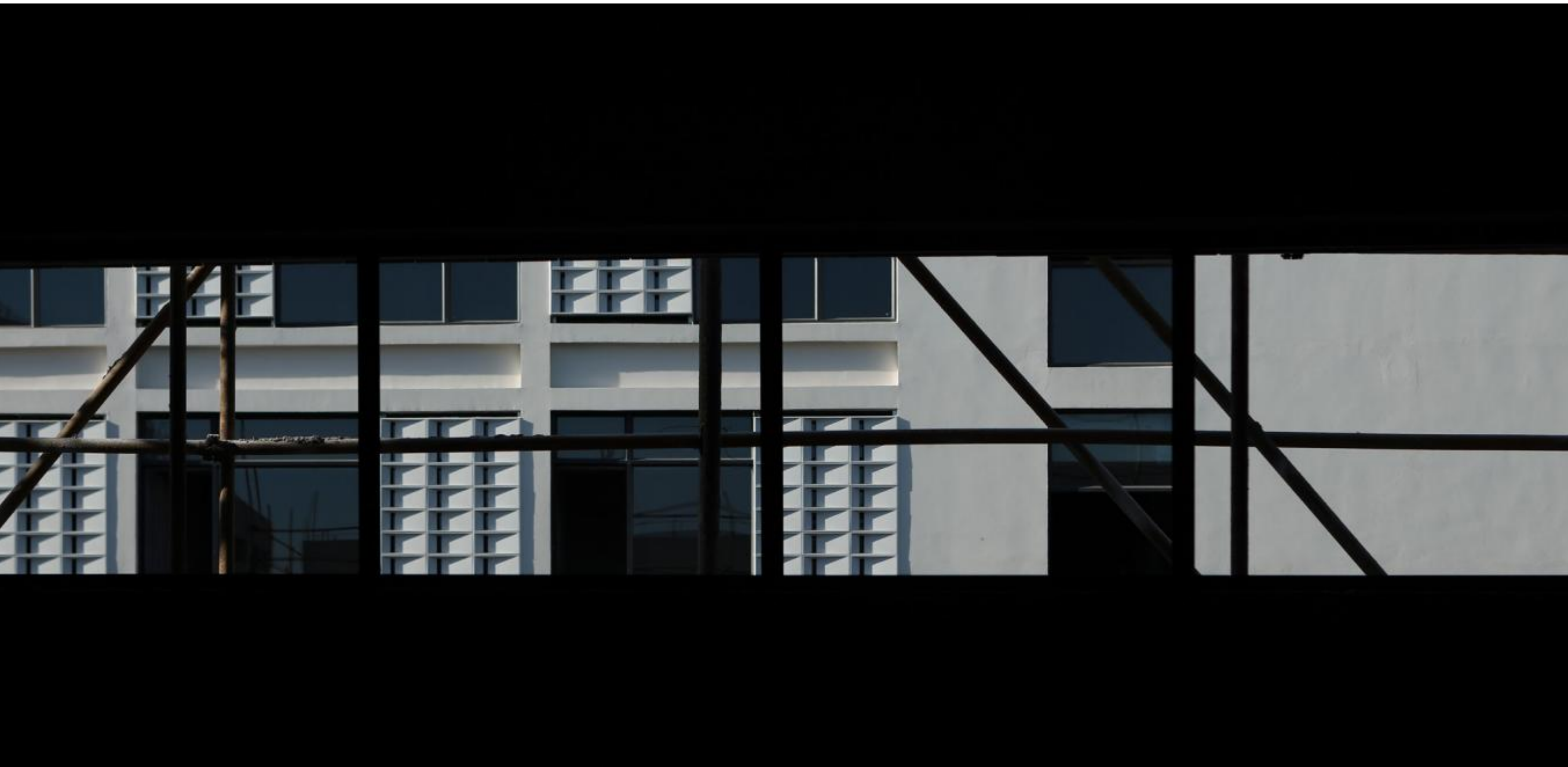
设计|深圳联合创艺建筑设计有限公司

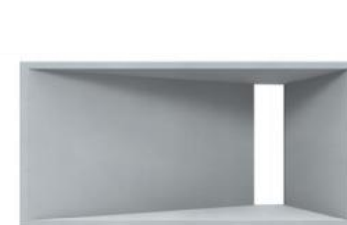
Yunmen 5 Season Cultural Tourism Town

Party A | Jiadefeng Cultural Tourism Co., Ltd

Design | Shenzhen United Chuangyi Architectural Design Co., Ltd







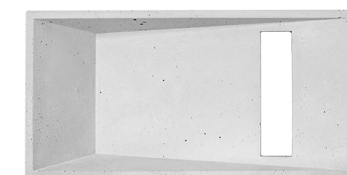
QK01 灰色

size: 400x200xH80mm



QK02 土红

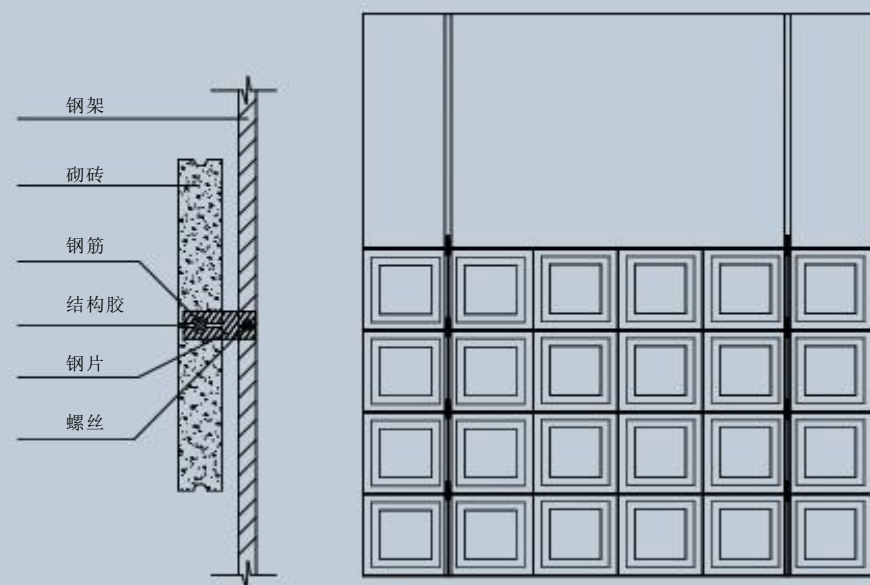
size: 400x200xH80mm



QK01-M1 白色

size: 400x200xH80mm

施工大样图



砌砖凹槽设计满足高层结构安装

Bricklaying groove design meets the requirements of high-rise structure installation



QK4 土红

QK3 灰色

size: 200x300xH120mm

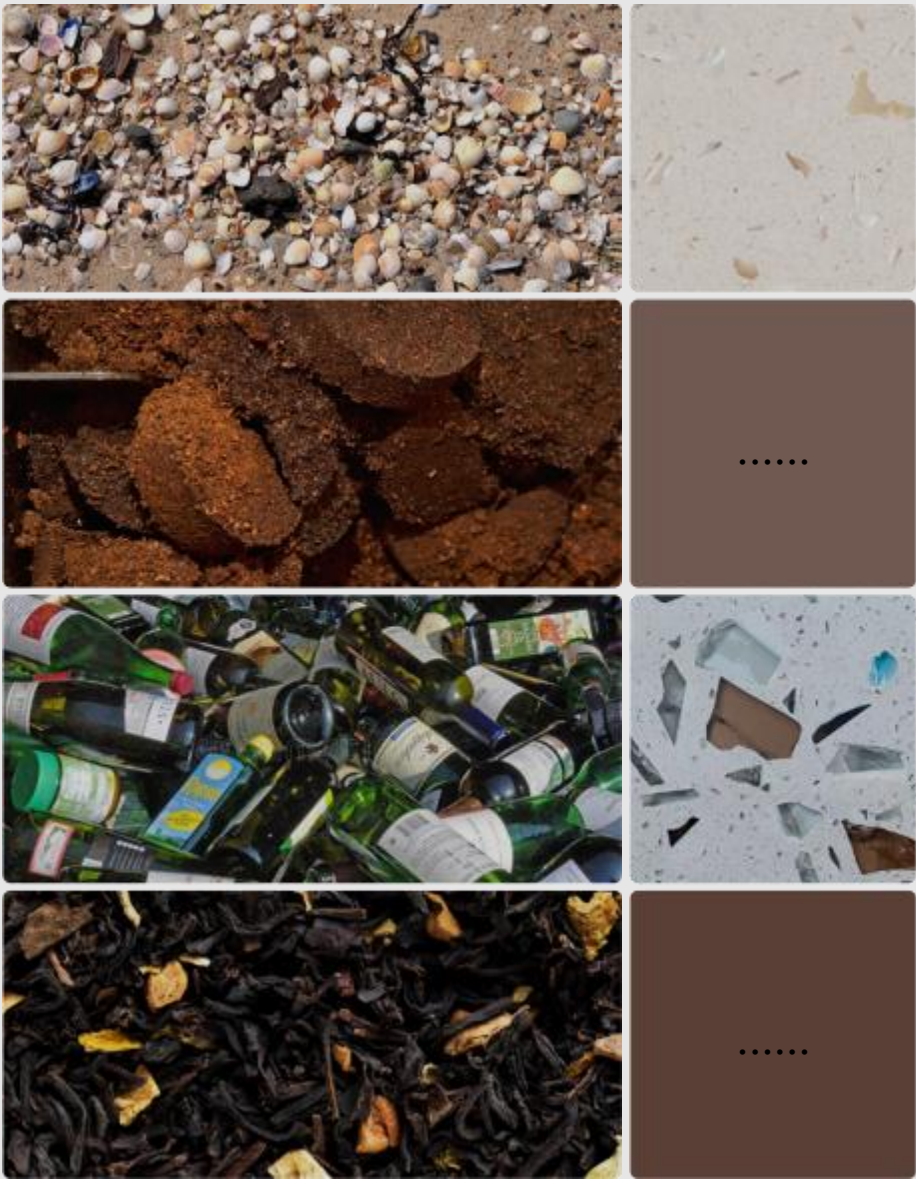
将建筑美感与自然的意蕴融合，也是东方生活美学的雅致表达。是低调奢华的典范，它能和很多色调搭配很好地相融到一起，塑造出多样变化的设计质感。

The integration of architectural beauty and natural connotation is also the elegant expression of oriental life aesthetics. It is a model of low-key luxury, which can be well integrated with many color combinations to create a variety of design textures.



未来研发可持续发展的更多探索 ...

The possibility of sustainable development of future research and development



更多色彩和更多质感 ...

More colors and more textures

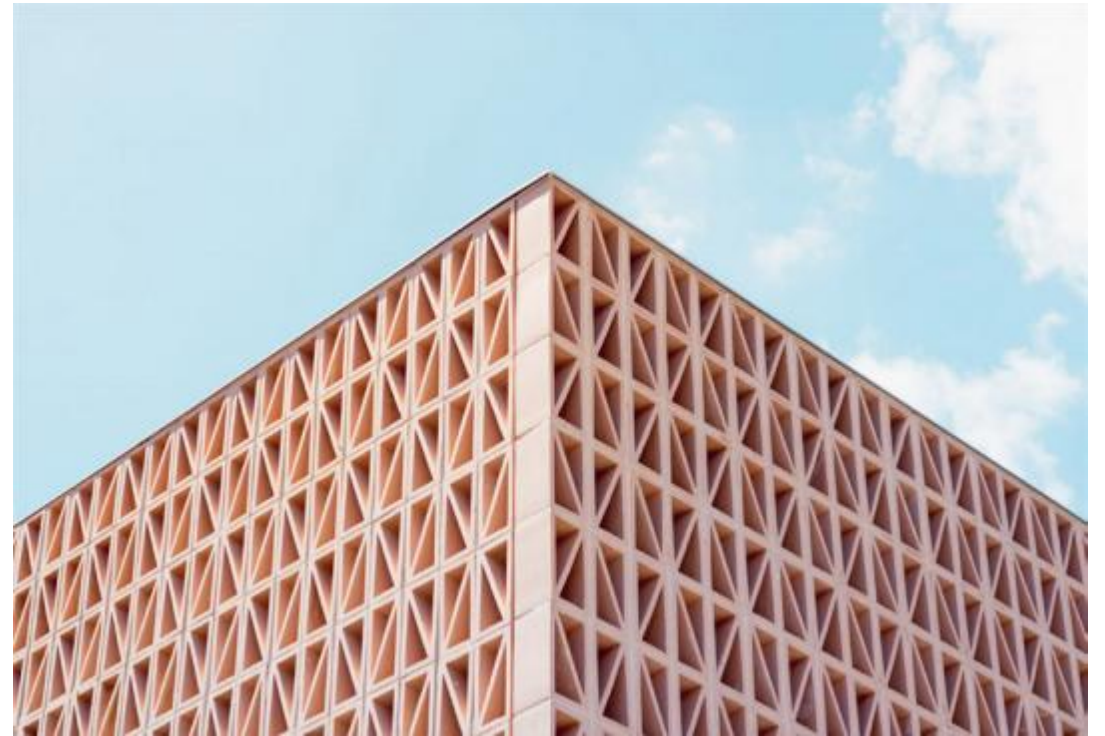
让不同的材质回归它的本质，还原独特肌理；从材料源头出发，再到创新研发、倡导资源回收，都将会对全球生态环境和能源消耗带来良性的改变。

Let different materials return to their essence and restore their unique texture; Starting from the source of materials, innovation, research and development, and advocacy of resource recovery will bring positive changes to the global ecological environment and energy consumption.



户外家具定制

Outdoor Furniture Customization

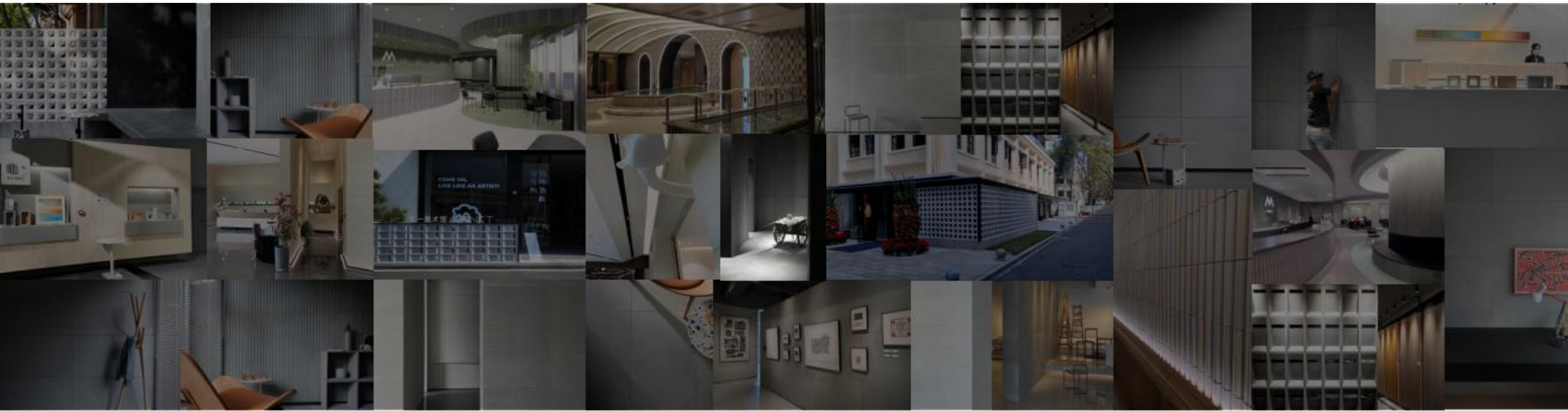


砌砖定制

Bricklaying Customization

感谢设计师、甲方业主、供应商对龟一再生计划的支持

Thank the designers, customers and suppliers for their support to the GUIYI Upcycling plan





龟 一

G U I . Y I

我们用这样一个再生实践
传递一个梦想

不放弃每一片垃圾
微小的力量 让世界更美好

" Our recycling practice is
more than just a dream,

it's a commitment to each piece of
waste redeemed.

With tiny efforts, we can turn the world around,
and make every piece of trash become
something profound."

